

SEQUENCE OF EVENTS RECORDER X500F

*Monitoring for the Power Generation,
Power Distribution, and Process Industries*



RONAN

MODEL X500F SEQUENCE OF EVENTS RECORDER

The new Ronan X500F Sequence of Events Recorder provides the Power Generation, Power Distribution, and Process Industries with the most advanced monitoring and fault finding data acquisition system. The system's high speed, high resolution digital multiplexers utilize network interface for open and fast transmission of plant status changes to the operator on local HMI or a remote host and visual annunciators.

The multiplexers simultaneously store the historical event information internally, as well as a duplicate storage in the local or remote Ronan HMI software X1000 for equipment failure and shutdown analysis. The new Ronan digital multiplexer provides a user friendly network browser interface for input/output configuration, on-line alarm view, and local multiplexer history browsing.

The new Ronan Windows operating system based X1000 application software presents clear and simple event information, operator interaction, and status of all inputs via multiple split window on a single video screen display. The ability to group plant or equipment related inputs allows immediate access to the specific event information or routing to different displays/peripherals.

A complete system configuration consists of field contact termination facilities, network multiplexers, network hub(s), X500F HMI industrial computers and peripherals such as keyboards and mouse, color video, printers, and the optional window type annunciators.

For critical applications the dual function SER/Visual Annunciator Systems are supplied in fully redundant configuration, where the loss of a single train does not adversely affect the information flow to the operators.



FEATURES

Multiplexers

- 128 Channel Multiplexers with Ethernet Output, GPS Time Receiver and IRIG-B Time Code Generator 200 µsec Time Resolution
- 1 msec Resolution
- Browser Interface to Multiplexer for Configuration, Event Display and History View
- Local 8,000 Event Storage
- Selectable Network Communication Protocol:
 - Ronan Proprietary
 - IEC60870 Over TCP/IP
 - DNP 3.0 Over TCP/IP
- Single Train or Multiple Redundant Architecture
- Continuous Multiplexer Hardware/ Software Diagnostics
- Live, Logic, or Dry Contact Input (Opto-isolated)
- Input Filter - Digital, 1 to 64,000 ms At for Alarms, Return-to-normal and Debounce, Selectable for Each Input
- Automatic Disable/Enable of Inputs by Programmable Limit Mode
- Enable/Disable of Individual Inputs
- Periodic Front End Input Test (Automatic)
- Access Protection through Web Browser by Multi-level Programmable Passwords

Ronan HMI Software

- Grouping of Events for Video Display or Printout
- Multiple Split Window Display of Events, Operator Interaction, System Diagnostic Status, and Input State
- 500,000 Event History Storage
- NTP (Network Time Protocol) for Time Synchronization with 100 msec Resolution
- Search/Review of Event History Database
- Selective Data Printout and Screen Print
- Boolean Function Processing, Alarm Sequence Processing, and Simulator Processing
- Network Time Synchronization
- Configurable Window Annunciator and Mimic Display Views
- Comprehensive Configuration Management Agent
- Multiplexer Distributed or Client/ Server Systems Architecture
- Open Protocols for External Host Interface

Ronan HMI Computer Hardware

- Industrial Grade, Seismic/Environmental Qualified, Rotating or Solid State Disk Memory, Pentium Class Microprocessor
- Single or Dual Network Interface
- Internal or Dual External Power Supplies
- Co-processor for Boolean Function Processing and Alarm Sequence Engine
- Active Relay Output for Hardware and Software Supervisory Monitoring

NETWORK HUBS

8 or 16 channel network hubs standard or switched with redundant power supply. RJ45 connector with one uplink feed.

X1000 HMI Client (Display)

X1000 HMI Server/Producer/Database (Server/Database)

X1000 HMI Integrated (Display and Database)

BUILDING BLOCKS

Termination Facilities

The Ronan Field Termination Facilities (FTA) provide Elco 8016 connectors; four for dry contacts, and eight for live contacts. Cable assemblies, equipped with one Elco connector for connection to the multiplexer and pigtail end for connection to the customer's existing field contact termination facilities are most commonly supplied. Ronan may supply one of a number of standard field termination facilities, or custom designed type to accommodate for special requirements. The field termination assembly typically provides for screw or compression, single or multiple output connection for interface to the multiplexers, and to digital control system (DCS), programmable logic controller (PLC), or plant computer. Additional features in standard designs are field contact isolation switches, sliding link terminals, field contact status indicators, diode gating or opto-isolators for multiple output requirements, and ground fault detection.



Multiplexers

The X501NET Multiplexers, designed for industrial application, are available for rack mount or surface mount NEMA (IP) enclosures. Each multiplexer houses single or dual power supplies for field contact and logic voltage capable of accepting single or dual power sources such as 115/235 Vac or 115 Vac/125 Vdc or 24, 48 Vdc. The single or dual multiplexer-controller provides for input card status interrogation, time tagging of events to 1 ms resolution, storing of up to 8,000 events, queuing of events, and transfer of events via several popular configurable communication protocols (IEC 60870, DNP 3.0, TCP/IP) over 10 Mbs 10baseT communication layer to the respective subscribers of events present on the network. Additional standard features are built in GPS time receiver with simple cable/antenna interface and IRIG-B generator output, temperature controlled precision oscillator, NTP (Network Time Protocol) for backup synchronization and complete web server for simple browser interface configuration and monitoring facilities. Up to 8,000 local event data storage, hardware/software diagnostic, field contact input test with an option that includes the opto-isolator input circuit. The sixteen input modules, each serving eight input contacts, are microprocessor controlled for input status interrogation, status change queuing, digital filters by individual inputs for alarm, return-to-normal, debounce, and normally open/normally closed field contact logic. This multiplexer is a self-sustained event acquisition, recorder, and producer unit.

Network Hubs

The network hubs, available in sixteen channel rack mount or eight channel surface mount, are utilized to place network devices such as multiplexers, HMI computers and Ronan X110NET Serial Annunciator on to a common network segment while providing complete physical isolation and switched port design chatter suppression for a much higher network integrity system.

The chassis design features rugged industrial packaging with single or dual power source such as 115/230 Vac, 50/60 Hz, or 24, 48, or 125 Vdc.



Ronan X500 (MUX ID: 5)

Point List

Main Menu Current user: User1 Logout

Refresh Goto Bottom of page

Point LogAddr	Tag	State	Polarity	
0	S-0	POINT_0	BAD	Normally Open
1	S-1	POINT_1	BAD	Normally Open
2	S-2	POINT_2	BAD	Normally Open
3	S-3	POINT_3	BAD	Normally Open
124	S-124	POINT_124	BAD	Normally Open
125	S-125	POINT_125	BAD	Normally Open
126	S-126	POINT_126	BAD	Normally Open
127	S-127	POINT_127	BAD	Normally Open

Point LogAddr Tag State Polarity

Refresh Goto Top of page Main Menu

HMI HARDWARE/SOFTWARE

Ronan Industrial Computer

The X500F Industrial Grade Computer is available in table top or rack mount design, tested for high level of Seismic application as well as RFI/EMI susceptibility requirements. Internal power supply for single source application, solid state memory, the CPU module, based on a Pentium class processor (upgradable to higher performance CPUs).



The computer is also available with external power supply for dual power source input, such as 115/230 Vac, 50/60 Hz or 24, 48, and 125 Vdc. A compact 1U configuration (1-3/4" high) computer is also offered for less critical applications.

A complete HMI computer is offered with rack mount or table top housing, color L.C.D.

for video display of available sizes, Color Dot Matrix printer for alarm/report printout, and color laser printer for custom color report printing. The printers are offered as dedicated serial printers or network printers depending on the system's architecture.



X500F SOFTWARE (X1000)

HMI (Human Machine Interface)

The Ronan X500F Sequence of Events Recorder is provided with several different versions of highly integrated, Windows based operator interface software uniquely designed to suit different applications and system complexities.

X1000 Integrated

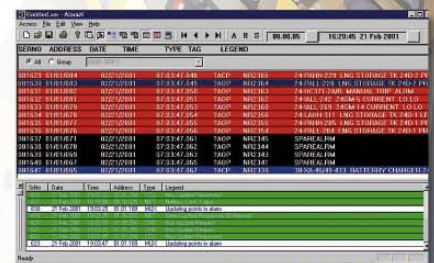
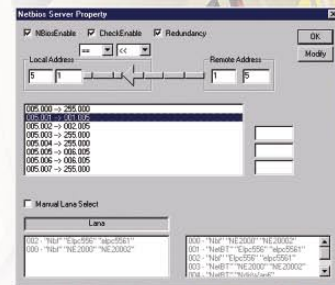
This Windows based application is generally used with small and large systems where all equipment is connected to a single network segment and applications requiring local database of sequence of events as well as redundant data acquisition needs.

The main software task is to provide, in clear and concise format of the event data, event storage, operator action, system's health, and current state of the field contacts. Software access is comprehensively password protected for different levels of users with different access rights and privileges. The system is ideally suited for remote substations, switchyards, power and process monitoring. The software provides configuration database for selection of normally open/normally closed field contact logic, filter parameters, display parameters, alarm sequences, network connection and user rights and group assignment.

All event data is stored in the rigid disc or solid state memory. The historical information of up to 500,000 events may be reviewed on the screen in its entirety or queried with specific parameters for an accurately sorted display of information or hard copy.

The new flexible Windows user interface event information is displayed in an event windows format which is user configurable. System messages use a second window.

The system's time is continuously synchronized via NTP client receiving time data from an NTP server.



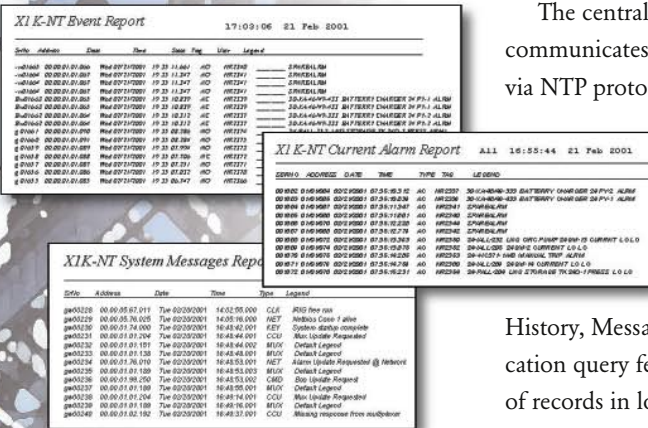
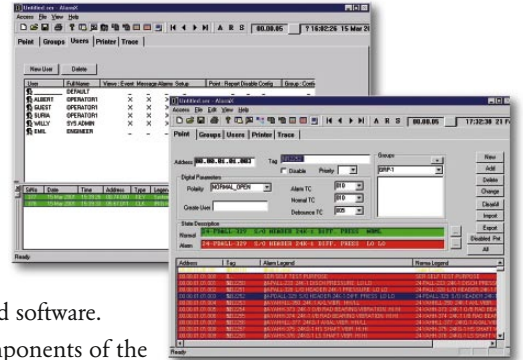
X1000 Server/Database/Client

This group of software is specifically designed to provide a client/server architecture through the use of system network. The software consists of clients user interface application and producer server/database for central-remote data acquisition application.

A typical application of the software is to continuously gather accurate 1 msec resolution event data from many remote locations into a central data repository location via dedicated Ethernet network structure or public Internet connection (Broad band).

The software package X1000 consists of one or more client user interface software which is similar to the Ronan standard integrated software. Producer software is provided as one of the components of the central server software that accompanies a third-party licensed database software.

The central station is provided with a GPS synchronized network time server that communicates to all network time clients inside each multiplexer and X1000 software via NTP protocol, providing an accurate system time synchronization.



REPORTS

The X500F system provides hard copy printout of all recorded data at the operator's request. Reports such as Current Alarms, Event History, Message History and Legends are generated and printed as needed. The application query feature allows sorting of stored data by any one record, or a combination of records in logical order. The system then allows easy print out of queried data as seen on the screen to a report printer on the network. The application uses all of the advanced features of the Windows operating system print functionality for printing.

PERIPHERALS

Videos – A wide variety of color LCD or CRT monitors is available for use with X500F HMI systems. Various resolutions and sizes are available for table top, panel or rack mounting.

Printers – Various color or black and white serial or network printers are available for report or alarm printing. Industrial grade impact printers are also available with 80 or 132 characters wide for continuous alarm printing.

Serial Input Visual Annunciators – The X500F system has the ability to send serial events via the network to X110 NET Ronan serial network annunciator for visual annunciation on all Models of the Ronan lamp cabinets.

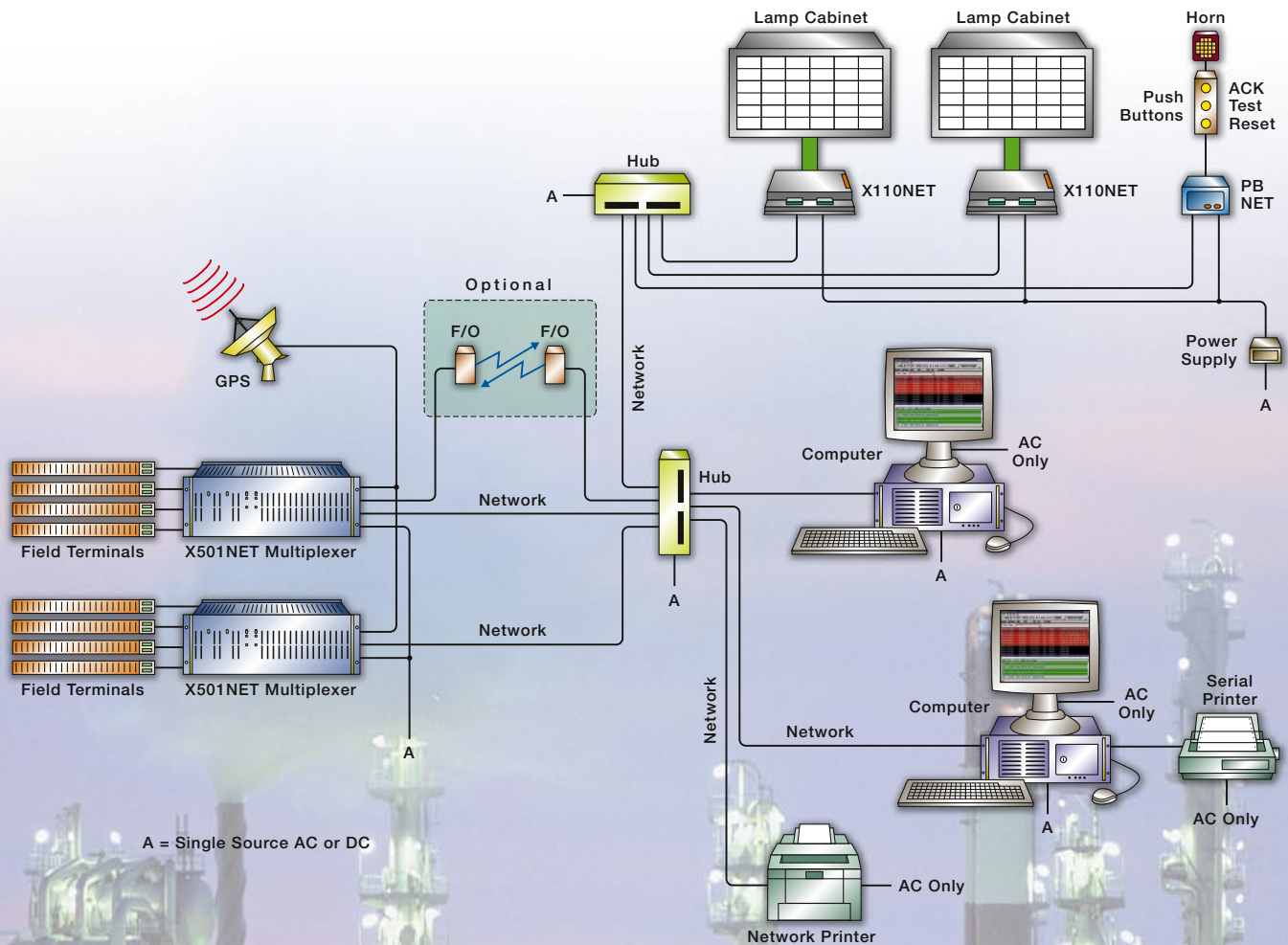
Host Connectivity – The Ronan network multiplexers provide host connectivity via IEC 60810, DNP3 and Ronan proprietary protocol to host device.



PLANT PROCESS MONITORING

The X500F basic system configuration consists of field contact termination facilities, network multiplexers, network hub, HMI computer unit including the support modules based on system requirement, a color monitor, and one or more serial or networkable printers. The field termination facilities are connected to the multiplexers via multiple conductor cable assemblies. The network cat5 10baseT cable is connected to a central hub which is connected via similar cable to the computer's network module hosting the Ronan HMI software.

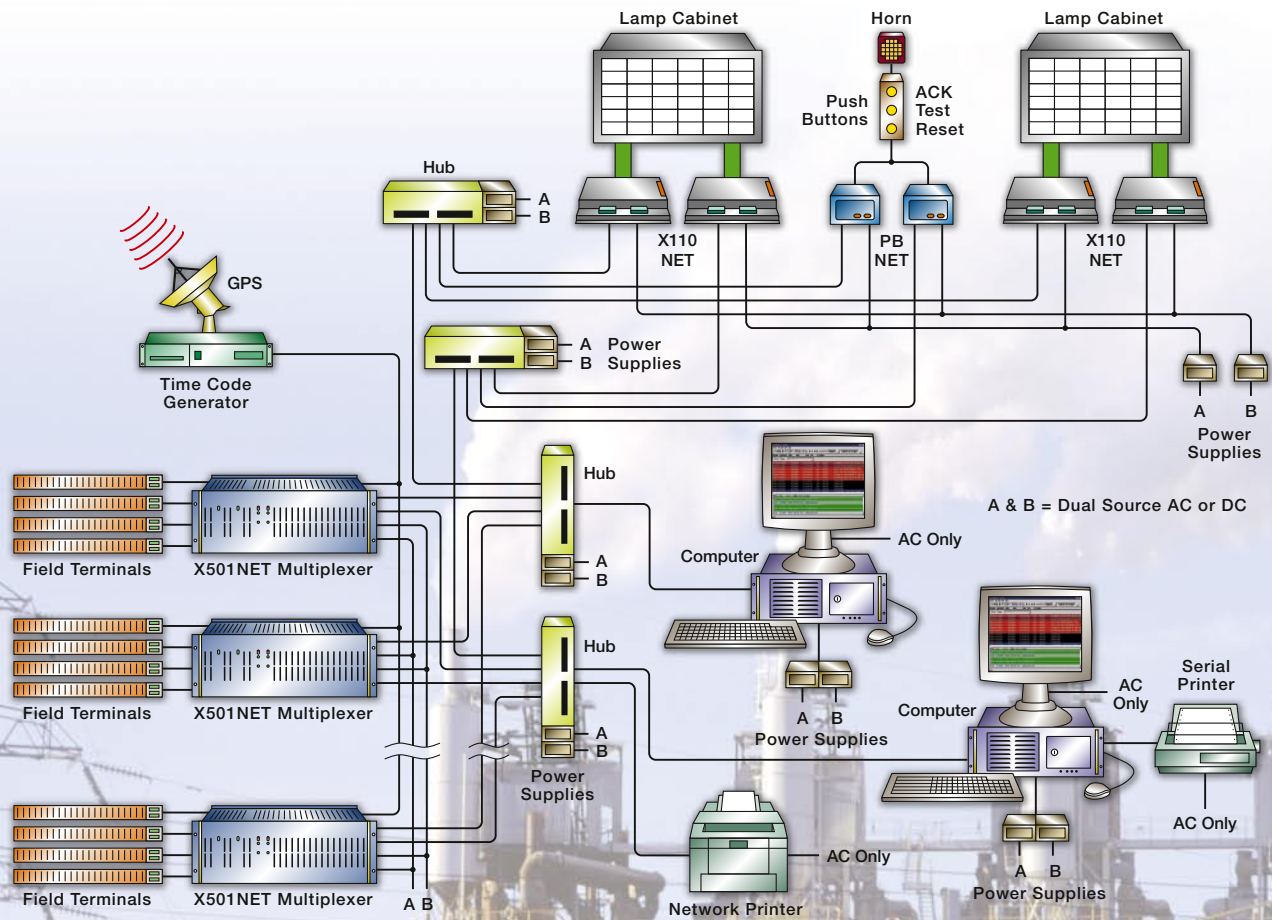
The system may, optionally, provide input status information to the Ronan network X110 NET serial input visual annunciator.



DUAL TRAIN REDUNDANT SYSTEM

For critical applications such as nuclear or conventional power plants, petro, petro chemical or chemical processes, the system may be configured in dual redundant trains. To achieve highest reliability and MTBF requirements for this type of requirements, all equipment is duplicated to provide two complete trains, connected via two networks, to the HMI computers which provide output to the color video and printer(s).

Optionally, the system may provide input status changes to a redundant network serial input visual annunciator. All host interfaces are connected via the network hub.

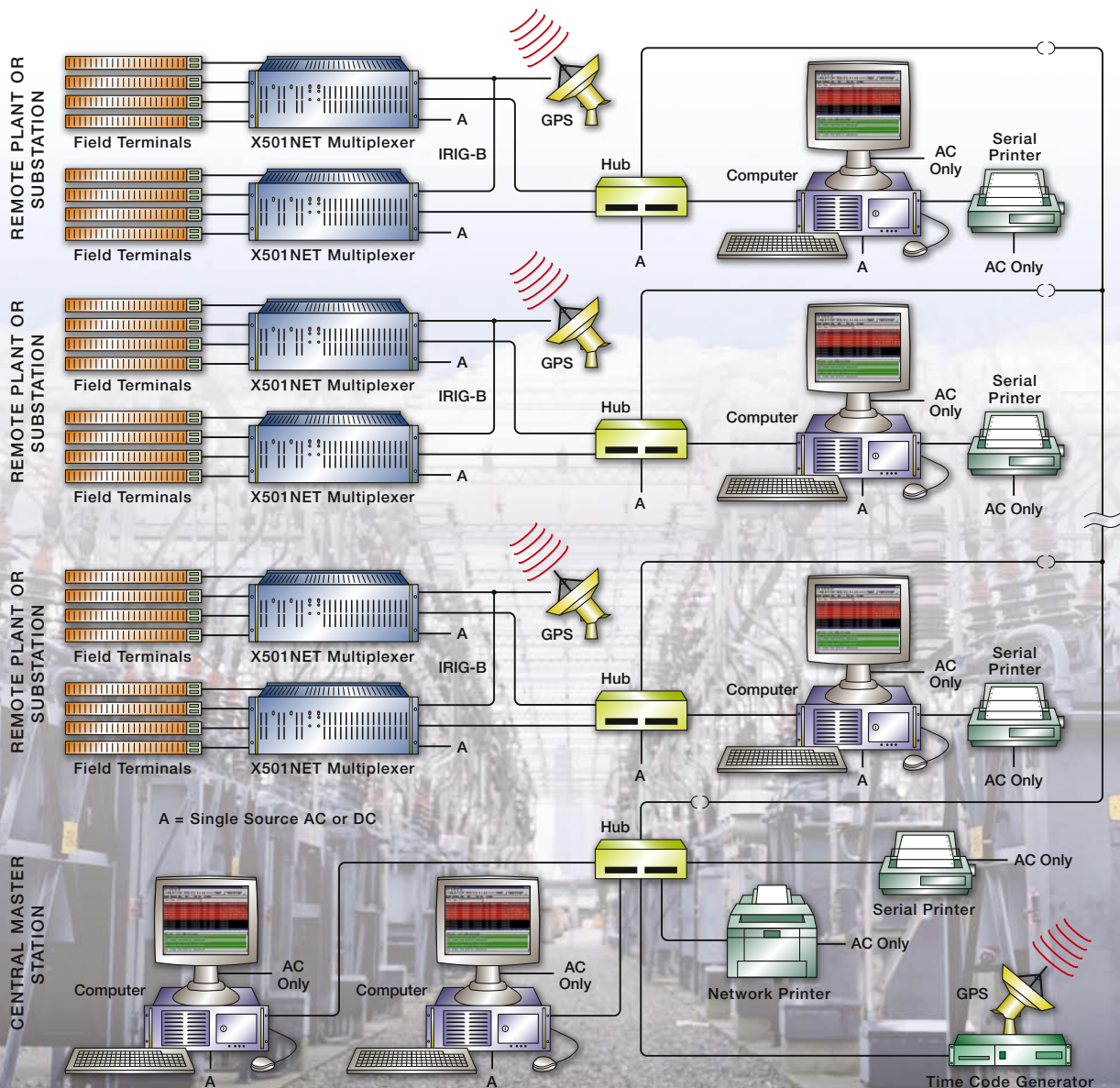


REMOTE MONITORING/EVENT RECORDING WITH CENTRAL DATA ACQUISITION - MANAGEMENT

Multiple site SER systems typically utilized in power distribution and switchyard applications require transfer of event information and site input configuration to and from a central master station. These remote SER systems are connected to the master station via dedicated Ethernet network or Broadband network. Ronan utilizes a client/server architecture using several different TCP/IP based protocols such as IEC-60870, Ronan proprietary protocol to communicate between remote sites and central station.

Clients reside in each multiplexer with its own dedicated IP address and connect to the central server/producer. All remote input configuration can be set up from the master station server application. Optionally, a local HMI display and data recorder is available at each remote SER site with its own display and CRT for local monitoring and maintenance.

Real time synchronization between multiple remote sites and central site for area wide synchronization is achieved by GPS (Global Positioning System) signal feed to each multiplexer and at central site through a GPS receiver/network time server.





REDUNDANT POWER SOURCE

All system components such as multiplexers, hubs, display components, and serial input annunciators may be supplied with redundant power supplies, diode gated into internal supply bases. The design of each component allows live exchange of any defective power supply on line without adverse effect to the system's operation.

COMMUNICATION PROTOCOL AND HOST INTERFACE

The system offers several different protocols for communicating between multiplexers and display (HMI) computer(s) and X110 NET serial visual window annunciator. As standard, Ronan's proprietary protocol with efficient and fast response time is used over TCP/IP as the base communication protocol.

The system also offers international standard IEC 60870 protocol to communicate between these devices. Other protocols that are available are DNP 3.0 and ModBus.

ELECTRICAL DATA CONNECTIONS

The connection from remote or local multiplexer to display computer(s) (HMI) is through a local isolated hub using cat5 network cable. For longer distance connection between multiplexers and hubs typically ethernet to fiber optic converters are used as network extenders. The connection between the display computer (HMI) and peripherals is typically serial or ethernet network, depending on the type of the devices.

SYSTEM PROGRAMMING AND CONFIGURATION

The system design allows individual multiplexers or X110 NET network serial visual annunciator to be acquired and configured on line, using the Web browser of a computer connected to the segment of the network. The embedded Web server in each of these input/output devices allow fast configuration of each device.

The system also provides a global configuration agent that allows the user to configure all I/O devices in one central database, and automatically distribute and update them.



SPECIFICATIONS

Field Contact Terminations

Terminals:	<i>Screw Type</i> – General Electric; States Sliding Link; Buchanan <i>Compression Type</i> – Weidmueller; Phoenix
Terminals per Input:	2 for Live Inputs; 3 for 2 Dry Inputs
Mechanical Design:	Surface Mount Assembly; Din Rail Mounted; Unistrut Mounted; 16 Inputs for Live Contacts; 32 Inputs for Dry Contacts
Ground Fault Isolation:	1 Switch per 32 Points; 1 Switch per 16 Points; 1 Switch per Point
Connection to Multiplexer:	Multiple Conductor Cables with 38 Pin Elco Connectors
Cable Type:	PVC or Crosslinked Polyethylene (Fire Retardant)

Multiplexer

Chassis:	Relay Rack Mount; Relay Rack Mount, Front Access Only; Surface Mount; Dry Contact, 4 Elco 38 Pin Connectors; Live Contact, 8 Elco 38 Pin Connectors
Channels:	128 Inputs, Dry or Live Field Contact Voltage, Nominal 24 Vdc, 48 Vdc, 125 Vdc, 115 Vdc
Power Supplies:	<i>Input</i> – 115 Vac 50/60 Hz; 240 Vac 50/60 Hz 125 Vdc; 48 Vdc <i>Output</i> – Logic Voltage 9 Vdc; Field Contact Voltage 24 Vdc, 48 Vdc, 125 Vdc <i>Power Indication</i> – Front Panel LED for Logic and Field Voltage <i>Controller</i> – Single Channel; Dual Channel (For Redundant Systems)
Time Synchronization:	Direct GPS Antenna Signal Feed 200 μ sec Resolution; IRIG-B Input; NTP (Network Time Protocol) Client
Resolution:	1 msec
Network Interface:	802.1 Ethernet Isolated Adapter 10baseT with RJ45 Connector; 10 Mbps Speed
Event Storage:	8,000 Events with Legends
Configuration:	Web Browser Interface; Global Configuration Agent
Supervisory Monitoring:	Watchdog Signal for Communication Problem, Time Sync Problem, Hardware Failure
Communication Protocols:	Ronan Proprietary: IEC 60870 over TCP/IP; DNP 3.0 over TCP/IP; For other Protocols Consult Ronan
Input Modules:	8 Channels per Module Standard 24 Vdc, 125 Vdc Field Contact Input; Opto-isolated 24 Vdc, 125 Vdc, 115 Vac, 150 Vac Field Contact Input

HMI Computer

Chassis:	Relay Rack Mount; Table Top; Integral Power Supply; External Power Supply; Passive Backplane Industrial Design
Power Supply:	Integral 115 Vac/230 Vac 50/60 Hz 125 Vdc; External 24 Vdc; 48 Vdc, 125 Vdc 115 Vac/230 Vac 50/60 Hz Single or Dual Redundant
Processor:	Pentium Class Current Market Release
Driver/Memory:	80 GB Hard Disk (or Current Market Release); 256 MB RAM; Solid State 5G (Or Current Market Release); CD ROM Drive 16X
Network Module:	Single (CPU Integral) or Redundant Intel or Equivalent PCI Bus
Video Module:	Super VGA PCI Bus
Relay Module:	Module with 8 Relays (Contact Output Programmable for Supervisory or Control Function)
Keyboard Interface:	Qwerty 101 Enhanced
Mouse Interface:	PC Mouse
Printer Interface:	Serial or Parallel
Operating System:	Windows XP (Or Current Release)

Peripherals

Alarm Printer:	Standard Impact Printer (Parallel, Serial or Network) 80 CWPP Citizen, Okidata (Color) 132 CWPP Genicom (Color)
Report Printer:	Standard Impact or Laser Printer (Network); HP Color Laser
Video:	Table Top; Panel Mount or Rack Mount; 15/17/20/21" L.C.D. Color Display, Customer Selected
Keyboard/Mouse:	Table Top or Rack Mount
Keypad:	Panel Mount for Limited Access

W A R R A N T Y

Ronan warrants equipment of its own manufacture to be free from defects in material and workmanship, under normal conditions of use and service, and will repair or replace any component found to be defective, on its return, transportation charges prepaid, within one (1) year of its original purchase.

This warranty carries no liability, either expressed or implied, beyond our obligations to replace the unit which carries the warranty.



RONAN ENGINEERING COMPANY
Display Products Division

21200 Oxnard Street, Woodland Hills, CA 91367 U.S.A. • 800-327-6626 • Fax 818-992-6435

8050 Production Drive, Florence, Kentucky 41042 U.S.A. • 859-342-8500 • Fax 859-342-6426

1 Tilley Road, Crowther Industrial Estate, Washington, Tyne & Wear, U.K., NE38 OAE • 191-416-1689 • Fax 191-416-5856

32 Bermondsey Road, Toronto, Ontario, Canada M4B 1Z5 • 416-752-0310 • Fax 416-752-8072

<http://www.ronan.com> E-Mail: sales@ronan.com



ISO 9001:2000 Certified