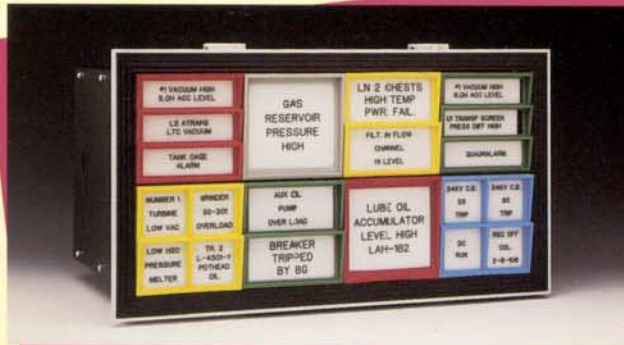



LAMP CABINETS AND INDICATORS





Ronan's extensive line of Lamp Cabinets and Indicators is designed for indicating visual status from remote annunciator logic, Programmable Logic Controllers (PLCs) or from ON/OFF relay or solid state drivers.

We offer a large variety of window sizes and customized array assemblies so you can select the optimal window size based on your available panel space. And our unique window bezels ensure you of the proper window location when re-lamping is required.

Our displays are equipped with either multiple incandescent bulbs or multiple Light Emitting Diode (LED) assemblies, which provide a virtually infinite display life.

Individual window display termination is made directly to compression-type terminals or via lug connectors to screw-type terminals. In applications requiring premanufactured cable connection, we furnish multipin connectors to meet customer specifications.

Our lamp cabinets combine excellent mechanical design with superb structural integrity. The aluminum extrusion construction assures you of the best available heat dissipation during continuous operating conditions as well as a pleasing outward appearance.

Ronan's Lamp Cabinet/Indicator Series. Maximum flexibility along with virtually maintenance-free operation, adds up to the quality and value you're looking for.

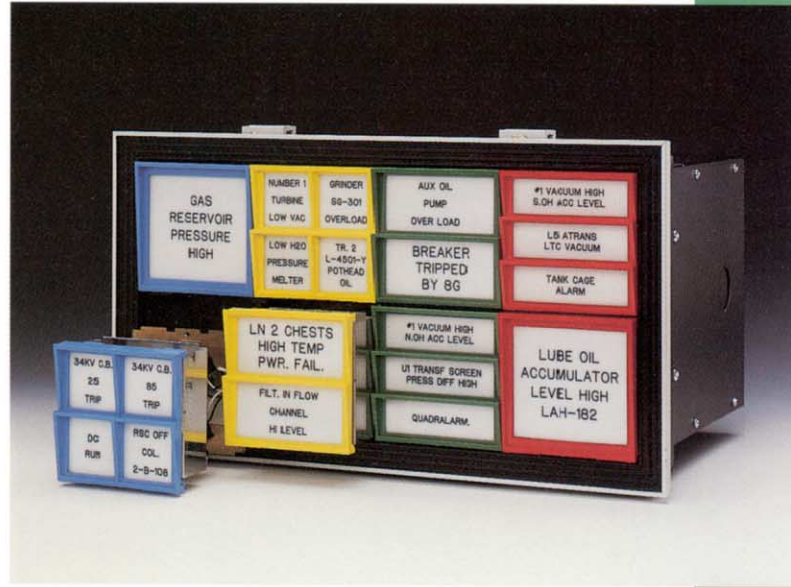
SERIES LC

The Series LC Lamp Cabinets provide maximum flexibility in terms of future expansion, intermix of window sizes and lamp test capabilities. The units feature plug-in modules with four window sizes, diode-gated lamp test for dc voltages, and relay type for ac voltages. Colored bezels and nameplates or sandwich lenses facilitate identification of plant location or functions and level of priorities of alarm.

Integral push-button modules can be installed for lamp test and operating controls for remote annunciator logic.

Two isolated screw terminals are supplied for each window for direct external connection or factory wiring to cabinet mounted multipin connectors. This allows interface via multi-conductor cables to the driver logic.

Each window is illuminated by two lamps for increased reliability and uniform light distribution. The LCP-4 single lamp per window module is available where economy and reduced power consumption are of primary concern.



SPECIFICATIONS

Standard Voltages: 24 Vdc, 48 Vdc, 125 Vdc, 24 Vac, 48 Vac, 115 Vac.

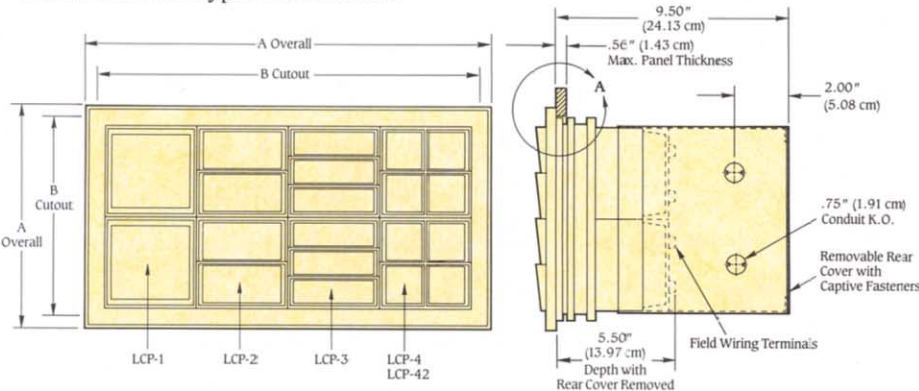
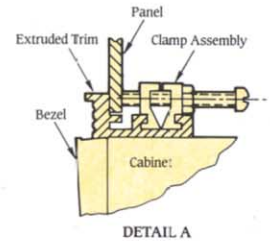
Cabinet Size: Any number of cabinet modules high and wide. (May exceed the numbers shown in the table below.)

Lamp Wattage: Two each 2-Watt lamps per window. 115 Vac and 125 Vdc modules have 3-Watt lamps. (LCP-4 has one 2-Watt lamp per window.)

Expandability: Specify the cabinet for the maximum number of windows per cabinet modules desired in the future, e.g., an LC-4000 accepts LCP-42, LCP-4, LCP-3, LCP-2 and LCP-1.

Intermixability: Any plug-in module up to the maximum window number per cabinet module specified.

Lenses: Sandwich type lenses available.



To Order:

2.4LC-4000

- Wired for Up to Eight Modules of LCP-4 (32 Windows)
- Cabinet Modules Wide
- Cabinet Modules High

LCP-()-() Lamp Module

- 24, 48, 115, 125 Vdc/Vac
- 1, 2, 3, 4 or 42 Windows/Cabinet Module
- LCP-3 = Standard
- LCP-3T = Diode Lamp Test (Vdc)
- LCPT-3-() = Relay Lamp Test (Vac)
- LC1PB-() = Push-button Module
- LC2PB-() = Push-button Module
- LC3PB-() = Push-button Module
- LC4PB-() = Push-button Module
- GP = General Purpose
- HS = Hermetically Sealed

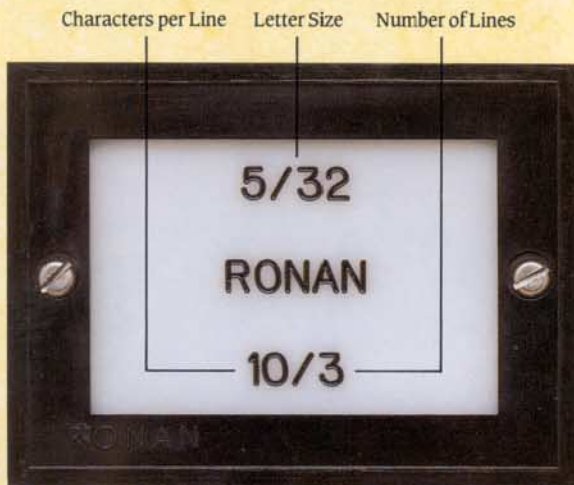
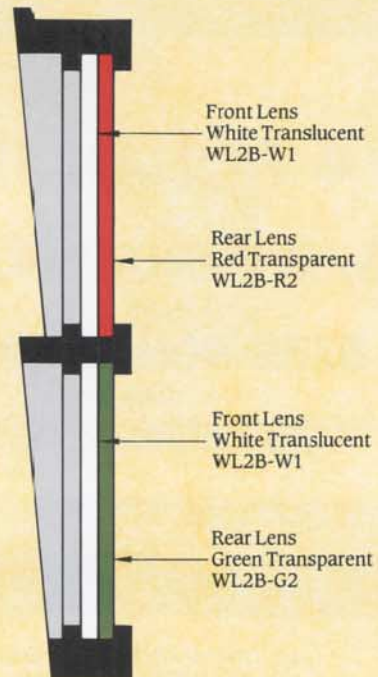
No. of Lamp Cabinet Modules High or Wide	Dimensions A—Overall inches (cm)	Dimensions B—Cutout inches (cm)	LC-1000 Window Size 3.5 in. H×3.5 in. W (8.89 cm×8.89 cm)		LC-2000 Window Size 1.75 in. H×3.5 in. W (4.45 cm×8.89 cm)		LC-3000 Window Size 1.16 in. H×3.5 in. W (2.95 cm×8.89 cm)		LC-4000 Window Size 1.75 in. H×1.75 in. W (4.45 cm×4.45 cm)	
			No. of Windows High or Wide	No. of Windows High	No. of Windows Wide	No. of Windows High	No. of Windows Wide	No. of Windows High or Wide		
1	5.00 (12.70)	4.38 (11.13)	1	2	1	3	1	2		
2	8.50 (21.59)	7.88 (20.02)	2	4	2	6	2	4		
3	12.00 (30.48)	11.38 (28.91)	3	6	3	9	3	6		
4	15.50 (39.37)	14.88 (37.80)	4	8	4	12	4	8		
5	19.00 (48.26)	18.38 (46.69)	5	10	5	15	5	10		
6	22.50 (57.15)	21.88 (55.58)	6	12	6	18	6	12		
7	26.00 (66.04)	25.38 (64.47)	7	14	7	21	7	14		
8	29.50 (74.93)	28.88 (73.36)	8	16	8	24	8	16		
9	33.00 (83.82)	32.50 (82.55)	9	18	9	27	9	18		
10	36.50 (92.71)	36.00 (91.44)	10	20	10	30	10	20		
11	40.00 (101.60)	39.50 (100.33)	11	22	11	33	11	22		
12	43.50 (110.49)	43.00 (109.22)	12	24	12	36	12	24		

NAMEPLATE ENGRAVING DETAILS

.....

A complete line of sandwich-type lenses is available on most lamp cabinets.* With these lenses, the need for color caps and their effect of reducing lamp life are eliminated. Sandwich lenses provide an even distribution of color behind the front lens. These type lenses are recommended when a color display behind the white lens is required to indicate alarm functions such as high or low, or to distinguish between alarm and shutdown functions. The Standard sandwich lens is available with white front lens and black engraved letters. Consult factory for special applications.

*Not available on LB-2100 and LB2200 cabinets.



Model X45-100



Model X18-300



Model X18-200



Model X18-100



Model X1D3

.....

NAMEPLATE ENGRAVING DETAILS

.....



Lamp Cabinet LB-1000, LC-1000
Lens WL1; Bezel WB1-()*



Lamp Cabinet LB-2000, LC-2000
Lens WL2; Bezel WB2-()*



Lamp Cabinet LB-3000; LC-3000
Lens WL3; Bezel WB3-()*



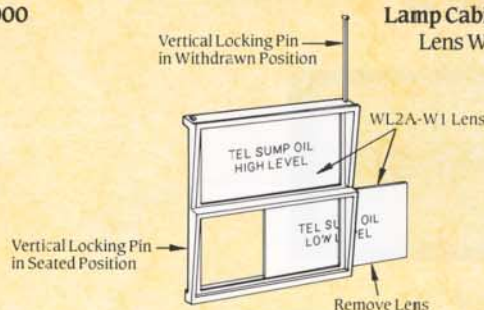
Lamp Cabinet LB-4000, LC-4000
Lens WL4; Bezel WB4-()*

* BEZEL COLORS

- Black (0) ■ Yellow (4) ■ Grey (8)
- Brown (1) ■ Green (5) ■ White (9)
- Red (2) ■ Blue (6)

TO ORDER: (Example)

WB2-(0) = Black Bezel for LB-2000
WB1-(2) = Red Bezel for LC-1000



NAMEPLATE INSTALLATION

The window lenses are inserted into channeled grooves and retained with vertical locking pins as shown. This design permits the relocation of individual legends without re-engraving nameplates.

NAMEPLATE ENGRAVING DETAILS

.....



Lamp Cabinet LB-1500
Lens WL15-()*()**; Bezel WB15-(Black Only)



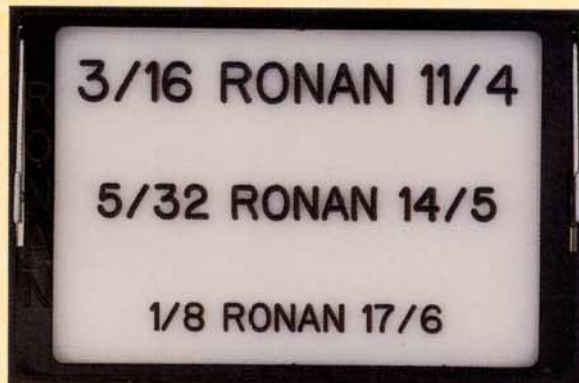
Lamp Cabinet LB-2448
Lens WL24-()*()**; Bezel WB24-()***



Lamp Cabinet LB-2100
Lens WL21-()*()**; Bezel WB21-()***



Lamp Cabinet LB-5500
Lens WL55-1/16-()**; Bezel WB55-(Black Only)



Lamp Cabinet LB-2200
Lens WL22-()*()**; Bezel WB22-()***



Lamp Cabinet LB-3500
Lens WL35-()*()**; Bezel WB35-()***
Bezel is Anodized Aluminum.
Colors available are: Black, White, Red, Blue, Green

* NAMEPLATE SIZE

- 1/8" Thick (A)
- 1/16" Thick (B)

** LENS COLORS

- Red (2) Blue (6)
- Yellow (4) White (9)
- Green (5) Amber (10)

*** BEZEL COLORS

- Black (0) Green (5)
- Brown (1) Blue (6)
- Red (2) Grey (8)
- Yellow (4) White (9)

LAMP STYLES/RATINGS

Display Types LB-1000, LB-2000, LB-3000, LB-4000, LC-1000, LC-2000, LC-3000, LC-4000, LB1, LB2, LB3, LB4, LB2100, LB-2200, LB-2448 and LB-3500:

24 Vac or Vdc, Lamp No. 1829, Bayonet Base, 2 W.
24 Vac or Vdc, Lamp No. 1224K, Bayonet Base, 3 W.
48 Vac or Vdc, Lamp No. 1835, Bayonet Base, 2 W.
120 Vac, Lamp No. 6S6SC/120, Screw Base, 6 W.
125 Vdc, Lamp No. 656SC/145, Screw Base, 6 W.

Display Types X45 and R100:

120 Vdc, Lamp No. 3S6SC/120, Screw Base, 3 W.
125 Vdc, Lamp No. 3S6SC/130, Screw Base, 3 W.

Display Type X18:

6 Vac or Vdc, Lamp No. 6 MB, Bayonet Base, 1 W.
12 Vac or Vdc, Lamp No. 12 MB, Bayonet Base, 2 W.
24 Vac or Vdc, Lamp No. 28 MB, Bayonet Base, 1.5 W.
48 Vac or Vdc, Lamp No. 48 MB, Bayonet Base, 2.5 W.
60 Vac or Vdc, Lamp No. 60 MB, Bayonet Base, 3 W.
120 Vac or Vdc, Lamp No. 120 MB, Bayonet Base, 3 W.

Display Types X1D3 and LB-1500:

28 Vac or Vdc, Lamp No. 327, Miniature Base, 1 W.
28 Vac or Vdc, Lamp No. 387, Miniature Base, 1 W.
6 Vac or Vdc, Lamp No. 328, Miniature Base, 1.5 W.

.....

WARRANTY

Ronan warrants equipment of its own manufacture to be free from defects in material and workmanship, under normal conditions of use and service, and will replace any component found to be defective, on its return, transportation charges prepaid, within one year of its original purchase. This warranty carries no liability, either expressed or implied, beyond our obligations to replace the unit which carries the warranty.

.....



RONAN ENGINEERING
COMPANY
P.O. Box 1275
21200 Oxnard Street
Woodland Hills,
California 91367 U.S.A.
(818) 883-5211
FAX (818) 992-6435

RONAN ENGINEERING
LTD. U.K.
1 Tilley Road
Crowther District 3
Washington, Tyne and Wear
United Kingdom, NE38-OEA
(091) 416-1689
FAX (091) 416-5856

RONAN ENGINEERING
LIMITED
32 Bermondsey Road
Toronto, Ontario
Canada M4B1Z5
(416) 752-0310
FAX (416) 752-8072

RONAN ENGINEERING
(AUST.) PTY. LTD.
Unit 10, 8 Leighton Place
Hornsby, N.S.W. 2077
Australia
(02) 477-7344
FAX (02) 477-6151